



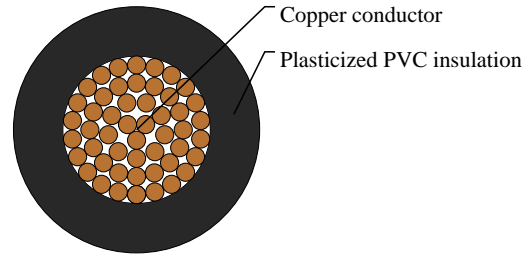
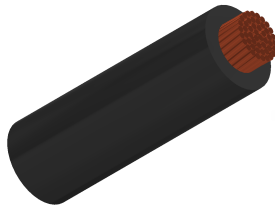
Caledonian

Automotive Cables

www.caledonian-cables.com

marketing@caledonian-cables.com

FLYWK&FLRYWK



APPLICATIONS

This PVC insulated low-tension automotive cable is used in motorcycles and other motor vehicles for starting ,charging,lighting,signal and instrument panel circuits.

STANDARDS

ISO 6722 Class D

CABLE CONSTRUCTION

Conductor:Cu-ETP1 bare according to DIN EN 13602

Insulation::Plasticized PVC (heat and cold resistant)

PHYSICAL AND THERMAL PROPERTIES

Operating temperature: -50°C to +105°C

Cold bending test according to ISO 6722 at -50 °C.

Short-term and long-term ageing according to ISO 6722, Class B.

Flexible conductors with PVC Thin wall insulation with increased mechanical strength

DIMENSION AND PARAMETERS

No. of Cores × Cross-sectional Area	No./Nominal Diameter of Strands	Diameter of Conductor (max.)	Nominal Insulation Thickness	Overall Diameter (min.)	Overall Diameter (max.)	Approx. Weight	Max. Conductor Resistance at 20 °C
No.×mm ²	no./mm	mm	mm	mm	mm	kg/km	MΩ × km
1x2.5	50/0.25	2.1	0.7	3.3	3.7	278	7.6