



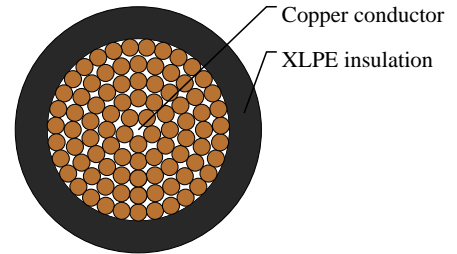
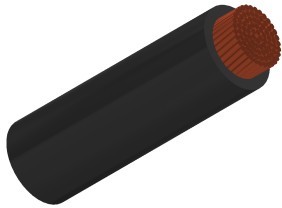
Caledonian

Automotive Cables

www.caledonian-cables.com

marketing@caledonian-cables.com

AEXSF 1C20



APPLICATIONS

This XLPE insulated single-core cable is used in low voltage circuits in automobiles(vehicles and motorcycles) ,Superior heat resistance with irradiated PE,Suitable for the consideration of very flexibility and thermal resistance.

STANDARDS

ES SPEC

CABLE CONSTRUCTION

Conductor: Annealed stranded copper

Insulation: Cross-linked Polyethylene (XLPE)

Standard Compliance: ES SPEC

PHYSICAL AND THERMAL PROPERTIES

Operating temperature: -40 °C to +135 °C

DIMENSION AND PARAMETERS

No. of Cores × Cross-sectional Area	No. and Dia. of Wires	Diameter of Conductor (max.)	Nominal Insulation Thickness	Overall Diameter (min.)	Overall Diameter (max.)	Approx. Weight	Electrical Resistance at 20°C (max.)
No.×mm ²	no./mm	mm	mm	mm	mm	kg/km	MΩ/m
1x20	784/0.18	6.3	1.1	8.5	8.8	225	0.99