



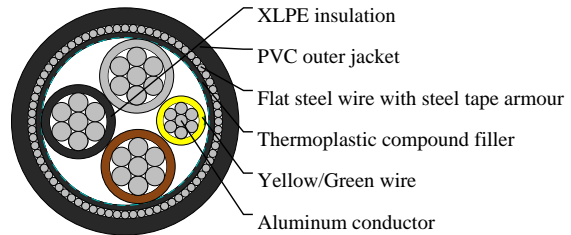
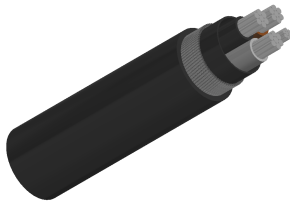
Caledonian

Industrial Cables (German Standard)

www.caledonian-cables.com

marketing@caledonian-cables.com

NA2XFGY



APPLICATIONS

NA2XFGY cables are for laying in earth, indoors, in ducts, in the open air, in the water, when additional mechanical protection is required when cable is exposed to mechanical tensile strain during laying and use. For use in mines according to Technical standards for electrical plants, equipments and installations in mines, as well as horizontal and vertical installation in places where there is a height difference in mines, including methane holes.

STANDARDS

IEC 60502-1

VDE 0276-603

VOLTAGE RATING

600/1000V

CABLE CONSTRUCTION

- Stranded aluminum conductor
- to DIN VDE 0295 cl. 2, IEC 60228 cl. 2
- Cross-linked polyethylene 2X11 acc. to VDE 0276-603
- Thermoplastic compound filler
- Flat steel wire with steel tape armour
- PVC outer jacket DMV5 to HD 603.1

COLOUR CODE

Insulation Colour Code

Color coded to DIN VDE 0293-308

4 cores (G) - Green-Yellow + Brown + Black + Grey

PHYSICAL AND THERMAL PROPERTIES

- Test voltage: 3500 volts
- Minimum bending radius: $12 \times \varnothing$
- Flexing temperature: -5°C to $+70^{\circ}\text{C}$
- Fixed installation temperature: -30°C to $+70^{\circ}\text{C}$
- Short circuit temperature: $+250^{\circ}\text{C}$



Caledonian

Industrial Cables (German Standard)

www.caledonian-cables.com

marketing@caledonian-cables.com

- Flame retardant: IEC 60332.1
- Insulation resistance: >20 MΩ x km

DIMENSION AND PARAMETERS

No. of Cores × Cross-sectional Area	AWG Size	Approx. Overall Diameter	Nominal Copper Weight	Approx. Weight
No.×mm ²		mm	kg/km	kg/km
3x25+16	4	26.5	263	1230