



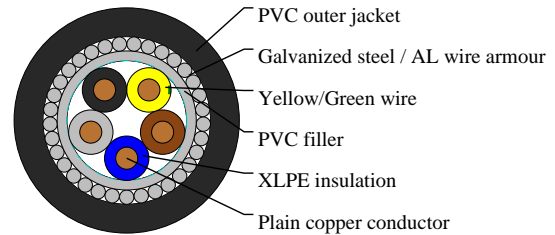
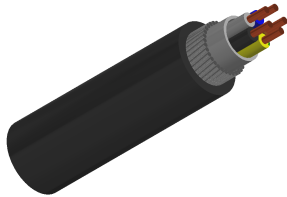
# Caledonian

Industrial Cables (German Standard)

[www.caledonian-cables.com](http://www.caledonian-cables.com)

[marketing@caledonian-cables.com](mailto:marketing@caledonian-cables.com)

## N2XRY



## APPLICATIONS

N2XRY is used for indoor, outdoor and underground installation in ducts and in the open where better mechanical protection is required, or for higher tensile stress during installation and operation. Suitable for comparatively high ambient temperature due to high maximum permissible conductor temperature.

## STANDARDS

IEC 60502-1

VDE 0276-604

BS 5467

## VOLTAGE RATING

600/1000V

## CABLE CONSTRUCTION

- Solid, plain copper conductor
- to DIN VDE 0295 cl. 1, BS 6360 cl. 1 and IEC 60228 cl. 1
- Cross-linked polyethylene 2X11 acc. to VDE 0276-604
- PVC filler
- Galvanized round steel / aluminum wire armour
- PVC outer jacket DMV5 to HD 603.1

## COLOUR CODE

Insulation Colour Code

Color coded to DIN VDE 0293-308

5 cores (G) - Green-Yellow + Blue + Brown + Black + Grey

## PHYSICAL AND THERMAL PROPERTIES

- Test voltage: 3500 volts
- Minimum bending radius: 15 x Ø
- Flexing temperature: -5° C to +70° C
- Fixed installation temperature: - 30° C to +70° C
- Short circuit temperature: +250° C
- Flame retardant: IEC 60332.1



# Caledonian

Industrial Cables (German Standard)

[www.caledonian-cables.com](http://www.caledonian-cables.com)

[marketing@caledonian-cables.com](mailto:marketing@caledonian-cables.com)

- Insulation resistance: >20 MΩ x km

## DIMENSION AND PARAMETERS

No. of Cores × Cross- sectional Area	AWG Size	Nominal Insulation Thickness	Nominal Sheath Thickness	Approx. Overall Diameter	Approx. Weight
No. × mm <sup>2</sup>		mm	mm	mm	kg/km
5x1.5	16	0.7	1.8	15.8	441