



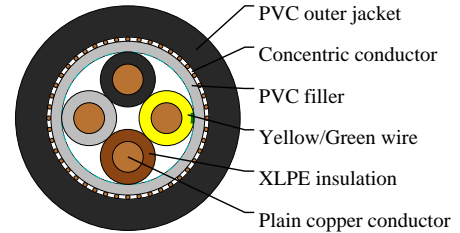
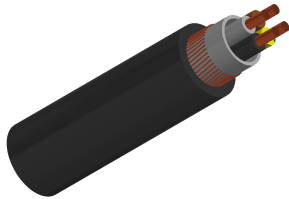
# Caledonian

Industrial Cables (German Standard)

[www.caledonian-cables.com](http://www.caledonian-cables.com)

[marketing@caledonian-cables.com](mailto:marketing@caledonian-cables.com)

## N2XCY



## APPLICATIONS

In indoor installation, in cable ducts outdoor and underground for power station, industrial plants and switching as well as local supply systems. Used for indoor installations for wiring of apparatus panels and switch board. Not to be used outdoors or in wet surroundings.

## STANDARDS

IEC 60502-1

VDE 0276-603

## VOLTAGE RATING

600/1000V

## CABLE CONSTRUCTION

- Solid, plain copper conductor
- to DIN VDE 0295 cl. 1, BS 6360 cl. 1 and IEC 60228 cl. 1
- XLPE insulation type DIX3 acc. to VDE 0276-603/5G
- PVC filler
- Concentric conductor: copper wires and copper tapes
- PVC outer jacket DMV5 to HD 603.1

## COLOUR CODE

Insulation Colour Code

Color coded to DIN VDE 0293-308

4 cores (G) - Green-Yellow + Brown + Black + Grey

## PHYSICAL AND THERMAL PROPERTIES

- Test voltage: 4000 volts
- Minimum bending radius: 15 x Ø
- Flexing temperature: -5° C to +70° C
- Fixed installation temperature: - 30° C to +70° C
- Short circuit temperature: +250° C
- Flame retardant: IEC 60332.1
- Insulation resistance: >20 MΩ x km



# Caledonian

Industrial Cables (German Standard)

[www.caledonian-cables.com](http://www.caledonian-cables.com)

[marketing@caledonian-cables.com](mailto:marketing@caledonian-cables.com)

## DIMENSION AND PARAMETERS

No. of Cores × Cross- sectional Area	AWG Size	Concentric conductor size	Nominal Insulation Thickness	Nominal Sheath Thickness	Approx. Overall Diameter	Approx. Weight
No.×mm <sup>2</sup>		mm <sup>2</sup>	mm	mm	mm	kg/km
4x2.5	14	2.5	0.7	1.8	15.4	315