



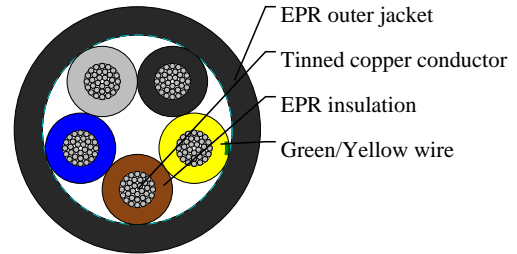
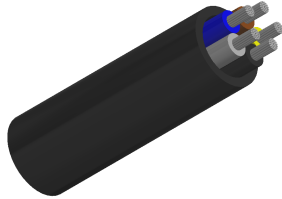
Caledonian

Industrial Cables (German Standard)

www.caledonian-cables.com

marketing@caledonian-cables.com

H05BB-F



APPLICATIONS

These rubbers insulated and sheathed electric cables, with a parallel EPDM tube, joined with a textile braid, are used especially for electric steam generator irons (named usually “vaporellas”). The cables are suitable for the stripping force on automatic machines and for low temperature environments.

STANDARDS

HD 22.12

DIN VDE 0282-12

VOLTAGE RATING

300/500V

CABLE CONSTRUCTION

- Bare/Tinned copper strand conductor
- acc. to DIN VDE 0295 class 5. IEC 60228 class 5
- Insulation: EPR rubber type E17
- Color coded to VDE 0293-308(3 conductors and above with yellow/green wire)
- Sheath: EPR rubber type EM6
- Sheath color: normally black

COLOUR CODE

Insulation Colour Code

Colour coded to VDE 0293-308

5 cores (G) - Green-Yellow + Blue + Brown + Black + Grey

PHYSICAL AND THERMAL PROPERTIES

- Test voltage:2000V
- Flexing bending radius: $4 \times \varnothing$
- Static bending radius: $3 \times \varnothing$
- Operating temperature: - 40°C- + 60°C
- Short circuit temperature: 250°C
- Flame retardant: VDE 0482-332-1-2/IEC 60332-1

DIMENSION AND PARAMETERS



Caledonian

Industrial Cables (German Standard)

www.caledonian-cables.com

marketing@caledonian-cables.com

No. of Cores × Cross- sectional Area	AWG Size	Nominal Insulation Thickness	Nominal Sheath Thickness	Approx. Overall Diameter	Approx. Weight
No.×mm ²		mm	mm	mm	kg/km
5x1	17(32/32)	0.6	1	8.7	115