



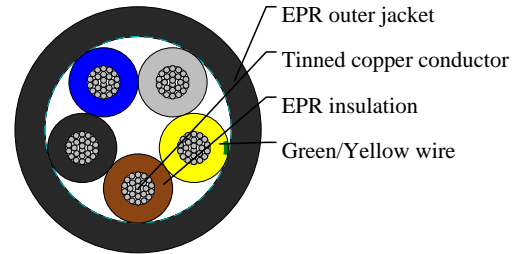
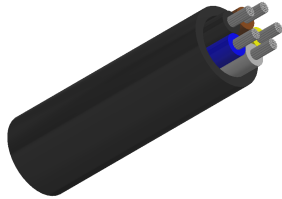
# Caledonian

Industrial Cables (German Standard)

[www.caledonian-cables.com](http://www.caledonian-cables.com)

[marketing@caledonian-cables.com](mailto:marketing@caledonian-cables.com)

## H05BB-F



## APPLICATIONS

These rubbers insulated and sheathed electric cables, with a parallel EPDM tube, joined with a textile braid, are used especially for electric steam generator irons (named usually “vaporellas”). The cables are suitable for the stripping force on automatic machines and for low temperature environments.

## STANDARDS

HD 22.12

DIN VDE 0282-12

## VOLTAGE RATING

300/500V

## CABLE CONSTRUCTION

- Bare/Tinned copper strand conductor
- acc. to DIN VDE 0295 class 5. IEC 60228 class 5
- Insulation: EPR rubber type E17
- Color coded to VDE 0293-308(3 conductors and above with yellow/green wire)
- Sheath: EPR rubber type EM6
- Sheath color: normally black

## COLOUR CODE

Insulation Colour Code

Colour coded to VDE 0293-308

5 cores (G) - Green-Yellow + Blue + Brown + Black + Grey

## PHYSICAL AND THERMAL PROPERTIES

- Test voltage:2000V
  - Flexing bending radius:  $4 \times \varnothing$
  - Static bending radius:  $3 \times \varnothing$
  - Operating temperature: - 40°C- + 60°C
- Short circuit temperature: 250°C  
Flame retardant: VDE 0482-332-1-2/IEC 60332-1

## DIMENSION AND PARAMETERS



# Caledonian

Industrial Cables (German Standard)

[www.caledonian-cables.com](http://www.caledonian-cables.com)

[marketing@caledonian-cables.com](mailto:marketing@caledonian-cables.com)

No. of Cores × Cross- sectional Area	AWG Size	Nominal Insulation Thickness	Nominal Sheath Thickness	Approx. Overall Diameter	Approx. Weight
No.×mm <sup>2</sup>		mm	mm	mm	kg/km
5x0.75	18(24/32)	0.6	1	8.3	100