



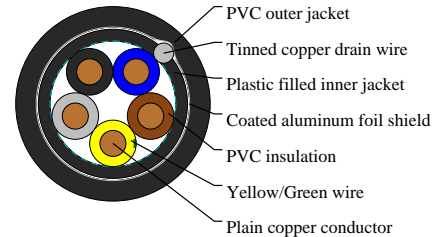
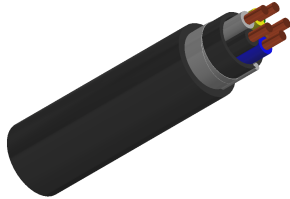
Caledonian

Industrial Cables (German Standard)

www.caledonian-cables.com

marketing@caledonian-cables.com

(N)YM(St)-J



APPLICATIONS

(N)YM(St)-J cables are made for an effective range of electromagnetic interference alternating fields by a static shield. This shielding is used for the installation in the computer sector, hospitals or industry measuring observation points with measuring instruments which are sensitive to interferences. These cables are also ideal for installation in living rooms of those people who are extremely sensitive to radiation. The cable is suitable for laying in, on and under plaster in dry and damp places as well as in concrete and masonry (installation in vibrating or stamped concrete excluded). Outdoor installation is only possible if the cable is not exposed to direct sunlight or if it is installed in cable conduits.

STANDARDS

DIN VDE 0250

VDE 0482-332-1-2

DIN EN 60332-1-2 / IEC 60332-1

VOLTAGE RATING

300/500V

CABLE CONSTRUCTION

- Solid plain copper conductor
- to DIN VDE 0295 cl. 1, BS 6360 cl. 1 and IEC 60228 cl
- PVC insulation TI1 to DIN VDE 0281 part 1
- Conductors stranded in layer
- Plastic filled inner jacket
- Coated aluminum foil shielding
- Solid tinned copper drain-wire
- High flexible PVC outer jacket type TM1, according to DIN VDE 0281 part 1

COLOUR CODE

Insulation Colour Code

Color coded to DIN VDE 0293-308

5 cores (G) - Green-Yellow + Blue + Brown + Black + Grey

PHYSICAL AND THERMAL PROPERTIES



Caledonian

Industrial Cables (German Standard)

www.caledonian-cables.com

marketing@caledonian-cables.com

- Test voltage: 2000 volts
- Minimum bending radius: 4 x Ø
- Flexing temperature: +5° C to +70° C
- Fixed installation temperature: - 40° C to +70° C
- Flame retardant: IEC 60332.1
- Insulation resistance: >20 MΩ x km

DIMENSION AND PARAMETERS

| No. of Cores × Cross- sectional Area | AWG Size | Nominal Insulation Thickness | Drain Wire Size | Nominal Sheath Thickness | Approx. Overall Diameter | Nominal Copper Weight | Approx. Weight |
|-----------------------------------------------|-----------|------------------------------------|--------------------|--------------------------------|--------------------------------|-----------------------------|-------------------|
| No. × mm ² | | mm | mm ² | mm | mm | kg/km | kg/km |
| 5 x 2.5 | 14(solid) | 0.7 | 1.5 | 1.4 | 13.5 | 125 | 280 |