



Caledonian

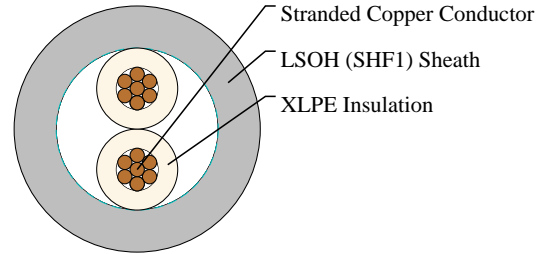
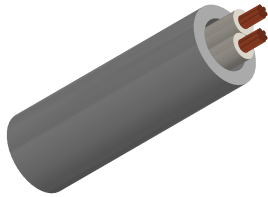
IEC60092 Offshore & Marine Cables

www.caledonian-cables.com

marketing@caledonian-cables.com

TI/ TU (MRE-2XH) 150/250V XLPE Insulated, LSOH (SHF1) Sheathed Flame Retardant Instrumentation & Control Cables (Multicore)2C0.75

MRE-2XH-2C0.75



APPLICATIONS

These cables are used on board of ships at all locations for fixed installations not subject to mechanical risk complying with IEC standards 60092-352. These cables are flame retardant, low smoke & halogen free, suitable for installations on passenger ships, as on other commercial vessels.

STANDARDS

IEC 60092-350/360/376/IEC 60332-1

IEC 60332-3-22/IEC 60754-1/2/IEC 61034

CABLE CONSTRUCTION

Conductors: Class 2 stranded copper conductor.

Insulation: XLPE.

Outer Sheath: LSOH (SHF1). SHF2 can be offered upon request.

COLOUR CODE

White with printed number.

PHYSICAL AND THERMAL PROPERTIES

Bending Radius for Fixed Installations: 4×OD

Temperature Range: -30°C ~ +80°C

DIMENSION AND PARAMETERS

No. of Cores × Cross-sectional Area	Nominal Insulation Thickness	Nominal Sheath Thickness	Nom. Overall Diameter	Approx. Weight
No.×mm ²	mm	mm	mm	kg/km
2x0.75	0.5	1.1	6.2	50